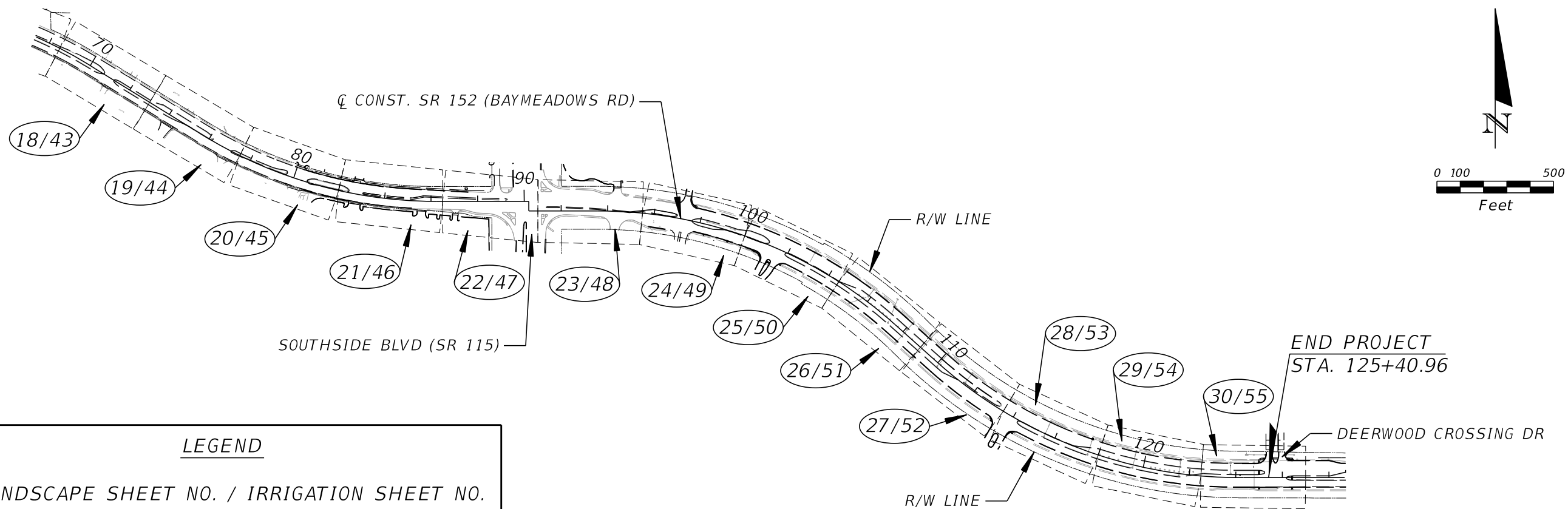


LEGEND

(28/53) LANDSCAPE SHEET NO. / IRRIGATION SHEET NO.



LEGEND

(28/53) LANDSCAPE SHEET NO. / IRRIGATION SHEET NO.

REVISIONS			
DATE	DESCRIPTION	DATE	DESCRIPTION

CHW, INC.  
 11801 RESEARCH DRIVE  
 ALACHUA, FLORIDA 32615  
 (352) 331-1976  
 CERT. OF AUTH. NO. LC26000527  
 ELROY JOSEPH BOLDUC III, R.L.A.  
 FLORIDA REGISTRATION NO. LA0001683

STATE OF FLORIDA DEPARTMENT OF TRANSPORTATION		
ROAD NO.	COUNTY	FINANCIAL PROJECT ID
SR 152	DUVAL	435931-1-52-01

**PROJECT LAYOUT**

SHEET NO.  
5

THE OFFICIAL RECORD OF THIS SHEET IS THE ELECTRONIC FILE DIGITALLY SIGNED AND SEALED UNDER RULE 61G10-11.001, F.A.C.

THIS LANDSCAPE MAINTENANCE PLAN IS FOR THE USE OF THE MAINTAINING AGENCY, POST ESTABLISHMENT, AND IS NOT INTENDED TO BE UTILIZED DURING CONSTRUCTION OR ESTABLISHMENT PERIODS. THE GOAL OF THE RECOMMENDED ACTIVITIES AND FREQUENCIES SHOWN BELOW IS TO MAINTAIN THE LANDSCAPE TO MEET OR EXCEED THE MINIMUM STANDARDS AS ESTABLISHED BY THE FDOT MAINTENANCE RATING PROGRAM (MRP) STANDARDS AND THE DESIGN INTENT OF THE LANDSCAPE PLAN.

ACTIVITY	FREQUENCY	DESCRIPTION
MOWING	ONCE A MONTH	MOW ENTIRE PROJECT LIMITS, FROM RIGHT OF WAY TO RIGHT OF WAY, IN ACCORDANCE WITH FDOT MRP STANDARDS. THESE AREAS MAY INCLUDE, BUT ARE NOT LIMITED TO, GUARDRAIL AREAS; BRIDGE ABUTMENTS; MAILBOXES; SIGNS; AND AREAS ADJACENT TO CURB, DITCHES, FENCE-LINES, AND SLOPES WHERE NORMAL MOWING EQUIPMENT IS NOT PRACTICAL AND STRING TRIMMING IS REQUIRED.
WATERING/IRRIGATION	ONCE A MONTH	IRRIGATION SYSTEM SHALL BE MAINTAINED IN AN OPERABLE CONDITION AT ALL TIMES. VISUALLY OBSERVE AND INSPECT THE SYSTEM IN OPERATION ON A MONTHLY BASIS.
LITTER REMOVAL	EVERY MONTH AND BEFORE EACH MOWING CYCLE	KEEP SITE AND PLANTING BEDS FREE OF LITTER INCLUDING FALLEN BRANCHES.
EDGING	AT EACH MOWING CYCLE	MECHANICAL EDGING SHALL BE USED FOR ALL EDGING.
WEEDING	EVERY MONTH	KEEP SITE AND PLANTING BEDS FREE OF UNDESIREABLE VEGETATION. PERFORM WEEDING BY GLYPHOSATE POST-EMERGENT CHEMICAL APPLICATION. HERBICIDE APPLICATION SHALL INCLUDE 'SEDGE' SPECIFIC POST-EMERGENT HERBICIDE. WEEDS ABOVE 12 INCHES SHALL BE HAND REMOVED, PRIOR TO HERBICIDE APPLICATION.
FERTILIZATION	AT TIME OF PLANTING, AND EVERY SPRING	READ AND FOLLOW ALL MANUFACTURER'S INSTRUCTIONS FOR FERTILIZER. APPLY FERTILIZER JUST INSIDE THE PLANT FOLIAGE (DRIPLINE). DO NOT APPLY FERTILIZER ON STEMS OR EXPOSED ROOTS OF PLANT MATERIAL.  TREES: FERTILIZE ALL TREES AT THE MANUFACTURER'S RECOMMENDED RATE WITH A 12 MONTH SLOW RELEASE, COMPLETE FERTILIZER OF APPROXIMATELY 3:1:2 RATIO INCLUDING MINOR ELEMENTS.
CHEMICAL APPLICATIONS	AS NEEDED	APPLY CHEMICALS PER MANUFACTURER'S SPECIFICATIONS. ALL LIQUID PRE AND POST HERBICIDAL TREATMENTS SHALL INCLUDE A TEMPORARY TRACER DYE IDENTIFIABLE FOR A MINIMUM OF 2 DAYS AFTER APPLICATION.  MONITOR PLANTS FOR PESTS AND DISEASE INCLUDING, BUT NOT LIMITED TO, GRUBS, MITES, AND MOLD.
WATER SAUCERS, STAKING, AND GUYING	AS NEEDED	REPAIR WATER SAUCERS AS NEEDED. MAINTAIN TREES, ADJUSTING STAKING AND GUYING AS NECESSARY.
MULCH	EVERY SPRING	MAINTAIN AT A DEPTH OF 3 INCHES. GRANULAR PRE-EMERGENT HERBICIDE SHALL BE APPLIED, PER MANUFACTURER'S SPECIFICATIONS, TO MULCH AREAS EVERY SPRING.
PRUNING	AS NEEDED	ALL TRIMMING SHALL BE PERFORMED IN ACCORDANCE WITH ANSI A300 STANDARDS. ALL PRUNING SHALL BE DIRECTED BY AN ON-SITE ISA CERTIFIED ARBORIST, WHO SHALL BE ON-SITE AT ALL TIMES DURING PRUNING OPERATIONS.  PRUNE ALL PLANT MATERIAL TO MAINTAIN THE MINIMUM STANDARDS AS ESTABLISHED BY THE LANDSCAPE PLANS AND THE FDOT MAINTENANCE RATING PROGRAM (MRP) STANDARDS.  VINES AND WEEDS SHALL BE COMPLETELY REMOVED FROM ALL EXISTING TREES ON A YEARLY BASIS.

REVISIONS				CHW, INC. 11801 RESEARCH DRIVE ALACHUA FLORIDA 32615 (352) 331-1976 CERT. OF AUTH. NO. LC26000527 ELROY JOSEPH BOLDOC III, R.L.A. FLORIDA REGISTRATION NO. LA0001683	STATE OF FLORIDA DEPARTMENT OF TRANSPORTATION			LANDSCAPE MAINTENANCE PLAN	SHEET NO.
DATE	DESCRIPTION	DATE	DESCRIPTION		ROAD NO.	COUNTY	FINANCIAL PROJECT ID		
						SR 152	DUVAL		435931-1-52-01